

2025
Products
Catalog

PORTAPOWER

www.portapower.com

POWER TO THE PORTABLE

PortaPower was founded in Hong Kong in 1995 with a mission of manufacturing and marketing high quality rechargeable batteries and related products for customers worldwide. With branches established in China and Germany, we are able to integrate R&D design, sales and services to satisfy both diverse and specific consumer needs globally. Given our highly efficient production and assembly lines and experienced R&D team, PortaPower continues to stay in the forefront of rechargeable battery technology, while constantly advancing our engineering and manufacturing capabilities to open new frontiers in the energy field.



CONTENTS

Power Tool Battery Packs & Charger

02

Household Items & Garden Tool Battery Packs

12

Diversifide Laptop Computer Batteries

16

Universal Laptop AC & PD

25

Digital Camera & Video Camcorder Battery Packs & Chargers

27

E-Bike & Wheelchair Battery Packs

31

Chargers

42

Type-C Rechargeable Lithium Battery

49

External Batteries

52

Power Station

57

Battery Cells

60



**POWER TOOLS
BATTERY PACKS
& CHARGER**

CORDLESS POWER TOOLS BATTERY PACKS

We provide compatible power tool battery packs for a wide range of brands available in the market, such as Makita, Milwaukee, Worx, DeWalt, Bosch, Ryobi, Paslode, Panasonic, Hitachi, AEG, Black & Decker, Craftsman, Firestorm, Festool, and National & Skil, etc.



Voltage: 4V
Capacity: 1400~2500mAh



Voltage: 12V
Capacity: 1300~3300mAh



Voltage: 14.4V
Capacity: 3000~5000mAh



Voltage: 12V
Capacity: 3000~3300mAh



Voltage: 18V
Capacity: 2800~5000mAh



Voltage: 14.4V
Capacity: 1300~3300mAh



Voltage: 21.6V
Capacity: 3000~5000mAh



Voltage: 14.4V
Capacity: 3000~5000mAh



Voltage: 24V
Capacity: 1300~3300mAh

AEG



Voltage: 18V
Capacity: 3000~5000mAh



Voltage: 18V
Capacity: 1300~3300mAh



Voltage: 36V
Capacity: 4500~7500mAh

*All brands, trademarks and registered trademarks are the property of their respective holders.

** Yellow: NI-MH type batteries Green: Li-ion type batteries

PortaPower design features:

- * Designed with cell voltage monitoring mechanism.
- * Built-in protection IC and NTC to stop battery from being over-charged.
- * Explosion avoided.

HITACHI

Model	Voltage	Capacity	Type
BT-108	10.8V	1500~2500mAh	Li-ion
BT-144	14.4V	1300~3300mAh	Ni-MH
BT-180	18V	1300~3300mAh	Ni-MH
BT-108	10.8V	3000~5000mAh	Li-ion
BT-144	14.4V	3000~5000mAh	Ni-MH
BT-180	18V	3000~5000mAh	Ni-MH
BT-252	25.2V	3000~5000mAh	Ni-MH
BT-144	14.4V	3000~5000mAh	Ni-MH
BT-180	18V	1500~2500mAh	Ni-MH
BT-360	36V	2700~5000mAh	Ni-MH
BT-144	14.4V	1500~2000mAh	Ni-MH
BT-180	18V	3000~5000mAh	Ni-MH
BT-360	36V	2700~5000mAh	Ni-MH
BT-360	3.6V	1500~2000mAh	Ni-MH

Makita



Voltage: 10.8V
Capacity:
1500~2500mAh



Voltage: 10.8V
Capacity:
1500~2000mAh



Voltage: 18V
Capacity:
4500~7500mAh



Voltage: 9.6V
Capacity:
1300~3300mAh



Voltage: 24V
Capacity:
3200~3300mAh



Voltage: 10.8V
Capacity:
3000~5000mAh



Voltage: 18V
Capacity:
3000~5000mAh



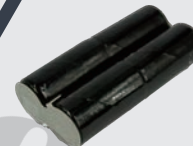
Voltage: 9.6V
Capacity:
1300~3300mAh



Voltage: 14.4V
Capacity:
1500~2000mAh



Voltage: 36V
Capacity:
3000mAh



Voltage: 4.8V
Capacity:
1300~2500mAh



Voltage: 14.4V
Capacity:
4500~7500mAh



Voltage: 18V
Capacity:
3000~5000mAh



Voltage: 12V
Capacity:
3200~3300mAh



Voltage: 14.4V
Capacity:
3000~5000mAh



Voltage: 18V
Capacity:
1500~2000mAh



Voltage: 18V
Capacity:
1300~3300mAh

*All brands, trademarks and registered trademarks are the property of their respective holders.

** Yellow: NI-MH type batteries Green: Li-ion type batteries

BLACK+DECKER

WORX

Voltage: 20V
Capacity: 3000~4900mAh

Voltage: 20V
Capacity: 3000~4900mAh

Voltage: 14.4V
Capacity: 1500~2500mAh

Voltage: 12V
Capacity: 1500~2500mAh

Voltage: 20V
Capacity: 3000~4900mAh

Voltage: 14.4V
Capacity: 3000~5000mAh

Voltage: 40V
Capacity: 1500~2450mAh

Voltage: 14.4V
Capacity: 1300~3300mAh

Voltage: 20V
Capacity: 1500~2500mAh

Voltage: 18V
Capacity: 1500~2500mAh

Voltage: 12V
Capacity: 1400~2500mAh

Voltage: 14.4V
Capacity: 1300~3300mAh

Voltage: 20V
Capacity: 1500~2500mAh

Voltage: 18V
Capacity: 1300~3300mAh

Voltage: 40V
Capacity: 1500~2450mAh

Voltage: 20V
Capacity: 1500~2500mAh

*All brands, trademarks and registered trademarks are the property of their respective holders.

** Yellow: NI-MH type batteries Green: Li-ion type batteries



Voltage: 18V
Capacity:
6000~7500mAh



Voltage: 18V
Capacity:
3000~5000mAh



Voltage: 14.4V
Capacity:
1300~3300mAh



Voltage: 12V
Capacity:
3000~5000mAh



Voltage: 18V
Capacity:
1500~2500mAh



Voltage: 9.6V
Capacity:
1300~3300mAh



Voltage: 28V
Capacity:
3000~5000mAh



Voltage: 28V
Capacity:
1500~2500mAh



Voltage: 12V
Capacity:
3000~5000mAh



Voltage: 12V
Capacity:
1500~2500mAh



Voltage: 18V
Capacity:
1300~3300mAh



Voltage: 18V
Capacity:
3000~5000mAh



Voltage: 18V
Capacity:
3000~5000mAh



Voltage: 12V
Capacity:
1500~2500mAh

*All brands, trademarks and registered trademarks are the property of their respective holders.

** Yellow: NI-MH type batteries Green: Li-ion type batteries



Voltage: 14.4V
Capacity:
1100~2500mAh



Voltage: 14.4V
Capacity:
1500~2000mAh



Voltage: 18V
Capacity:
1300~3300mAh



Voltage: 14.4V
Capacity:
1500~2500mAh



Voltage: 18V
Capacity:
1300~3300mAh



Voltage: 14.4V
Capacity:
1300~3300mAh



Voltage: 18V
Capacity:
3000~5000mAh



Voltage: 24V
Capacity:
1300~3300mAh



Voltage: 18V
Capacity:
4000~5000mAh



Voltage: 10.8V
Capacity:
1500~2500mAh



Voltage: 7.2V
Capacity:
1300~3300mAh



Voltage: 18V
Capacity:
3000~5000mAh



Voltage: 14.4V
Capacity:
3000~5000mAh



Voltage: 12V
Capacity:
1300~3300mAh



Voltage: 18V
Capacity:
1100~2500mAh



Voltage: 14.4V
Capacity:
1500~2000mAh



Voltage: 12V
Capacity:
1500~2000mAh

*All brands, trademarks and registered trademarks are the property of their respective holders.

** Yellow: NI-MH type batteries Green: Li-ion type batteries



Voltage: 14.4V
Capacity:
3000~5000mAh



Voltage: 15.6V
Capacity:
1300~3300mAh



Voltage: 2.4V
Capacity:
1300~3300mAh



Voltage: 18V
Capacity:
1300~3300mAh



Voltage: 3.6V
Capacity:
2000mAh



Voltage: 12V
Capacity:
1300~3300mAh

PANASONIC



Voltage: 24V
Capacity:
1300~3300mAh

CRAFTSMAN



Voltage: 21.6V
Capacity:
2800~5000mAh



Voltage: 7.2V
Capacity:
2000mAh



Voltage: 14.4V
Capacity:
1300~3300mAh



Voltage: 28.8V
Capacity:
3000~5000mAh



Voltage: 9.6V
Capacity:
1300~3300mAh



Voltage: 13.2V
Capacity:
1300~3300mAh



Voltage: 3.6V
Capacity:
1100~2000mAh



Voltage: 12V
Capacity:
1300~3300mAh



Voltage: 7.2V
Capacity:
1500~3300mAh

*All brands, trademarks and registered trademarks are the property of their respective holders.

** Yellow: NI-MH type batteries Green: Li-ion type batteries



Voltage: 20V
Capacity:
3000~4900mAh



Voltage: 12V
Capacity:
1300~3300mAh



Voltage: 14.4V
Capacity:
1300~3300mAh



Voltage: 14.4V
Capacity:
3000~5000mAh



Voltage: 12V
Capacity:
1500~2500mAh



Voltage: 12V
Capacity:
1300~3300mAh



Voltage: 24V
Capacity:
1300~3300mAh



Voltage: 20V
Capacity:
1500~2500mAh



Voltage: 18V
Capacity:
1300~3300mAh



Voltage: 12V
Capacity:
1300~3300mAh



Voltage: 18V
Capacity:
1500~2500mAh



Voltage: 14.4V
Capacity:
3000~5000mAh

Voltage: 14.4V
Capacity:
1300~3300mAh



Voltage: 18V
Capacity:
1300~3300mAh



Voltage: 20V
Capacity:
6000~7500mAh



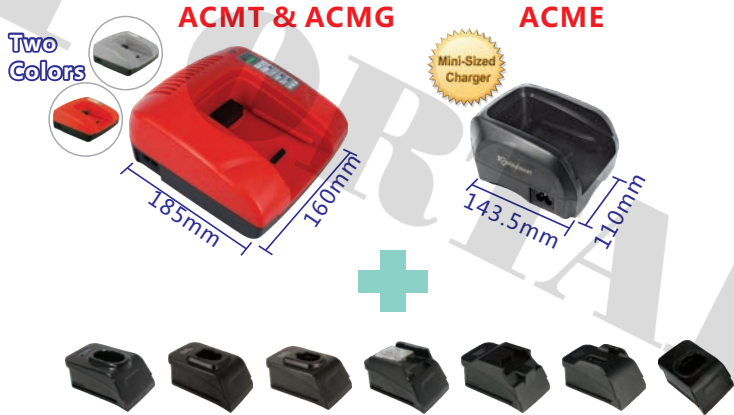
Voltage: 9.6V
Capacity:
1300~3300mAh



Voltage: 7.2V
Capacity:
1500~3300mAh

POWER TOOL CHARGERS

Fit for both Ni-Cd / Ni-MH & Li-ion Power Tool Batteries



We provide a broad range of interchangeable charger plates
Over 95% power tool battery charger plates available



Dual USB Output Ports
(ACMT 5V 2.1A ACME 5V 1A)

Specifications

Model	Input	Output
ACMT	100-240V 1.2A Max.	7.2V - 25V 3A Max.
ACMG		21.6V - 36V 2.1A Max.
ACME		7.2V - 18V 1.5A Max.

- * Fit for Ni-Cd/Ni-MH & Li-ion Power Tool Batteries
- * Interchangeable plates to suit different battery models, simply change the charger plates
- * Cover 90% Power Tool battery models



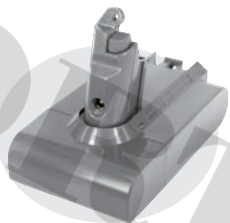
**HOUSEHOLD ITEMS
& GARDEN TOOL
BATTERY PACKS**

HOUSEHOLD ITEMS BATTERY PACKS

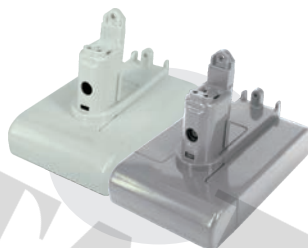
More capacity Selections available



Fit model: Dyson DC16
Voltage: 21.6V
Capacity: 2000mAh



Fit model: Dyson V6
Voltage: 21.6V
Capacity: 3300mAh



Fit model: Dyson DC35
Voltage: 22.2V
Capacity: 1500 - 2500mAh



Fit model: Dyson DC35
Voltage: 22.2V
Capacity: 1500 - 2000mAh



Fit model: Dyson V8
Voltage: 21.6V
Capacity: 3000 - 4000mAh

dyson



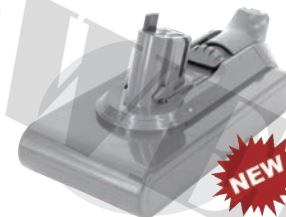
Fit model: Dyson V10
Voltage: 25.2V
Capacity: 3000 - 3600mAh



Fit model: Dyson V8 Animal Cordless
Voltage: 21.6V
Capacity: 5000mAh



Fit model: Dyson V7
Voltage: 21.6V
Capacity: 1500 - 2500mAh



Fit model: Dyson V11 FLUFFY EXTRA
Voltage: 25.2V
Capacity: 3600 - 3900mAh

*All brands, trademarks and registered trademarks are the property of their respective holders.

iRobot



Fit model: Roomba 500 / 600 / 700
Voltage: 14.4V
Capacity: 3000 - 3300mAh



Fit model: Roomba 440
Voltage: 14.4V
Capacity: 3300mAh

**indream**



Fit model: Indream 9700 / 9300 / 9200
Voltage: 14.4V
Capacity: 2200 - 3300mAh

neato
robotics®



Fit model: XV-25
Voltage: 7.2V
Capacity: 3000mAh



Fit model: D7500
Voltage: 21.6V
Capacity: 3000 - 3300mAh

greenworks®

Fit model: G40LM41 Cordless
Voltage: 36V
Capacity: 5000mAh



Fit model: G40LM35 Cordless
Voltage: 36V
Capacity: 2500mAh



Fit model: Accu ComfortCut Li-18/23R
Voltage: 18V
Capacity: 2500 - 3500mAh

 **GARDENA®**



Fit model: Gardena 124562
Voltage: 18V
Capacity: 2500mAh



Fit model: Smart Sileno City9676473-03
Voltage: 18.5V
Capacity: 2500 - 3400mAh

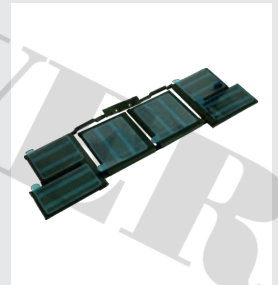
*All brands, trademarks and registered trademarks are the property of their respective holders.



DIVERSIFIED LAPTOP COMPUTER BATTERIES

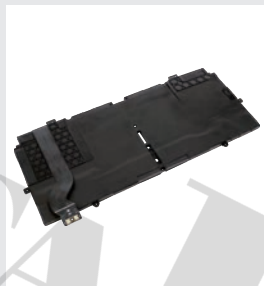
DIVERSIFIED LAPTOP COMPUTER BATTERIES

We provide choices for a broad range of brands: Acer, Apple, Asus, Dell, LG, Compaq, Fujitsu, Gateway, Sony, Lenovo, Samsung, MSI, Panasonic, Toshiba, HP, and IBM, etc.



*All brands, trademarks and registered trademarks are the property of their respective holders.





*All brands, trademarks and registered trademarks are the property of their respective holders.





*All brands, trademarks and registered trademarks are the property of their respective holders.



TOSHIBA

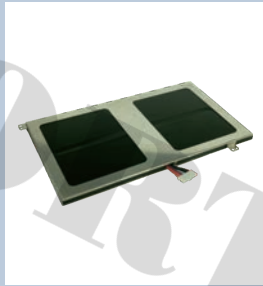


SONY



*All brands, trademarks and registered trademarks are the property of their respective holders.

FUJITSU



DURACELL®



SAMSUNG



LG



UNIVERSAL LAPTOP AC & PD



UNIVERSAL LAPTOP AC & PD

AC Adapter

We provide 38 kinds of Interchangeable connector tip for customers to choose with.
- Select a suitable connector tip and fit into the laptop DC-in jack tightly and steadily.
Then connect the DC output of the Power Adapters.



Tip for MacBook



19V / 4.74A
90W



58.5 x 34.5 x 134mm

19V / 2.36A
45W



90.6 x 35 x 26mm

19.5V / 3.25A
65W



116.5 x 61.5 x 34mm

USB-C Power Delivery

USB PD increases power delivery through USB cables and connectors, expanding the cable bus power supply capabilities in USB applications. The specification enables higher voltages and currents, delivers up to 100 watts of power, and can freely change the direction of power delivery.



20V / 3.25A
PD65W



73 x 57 x 33mm

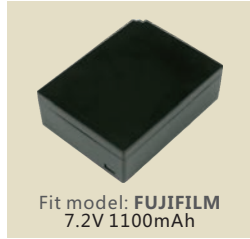
20V / 5A
PD100W



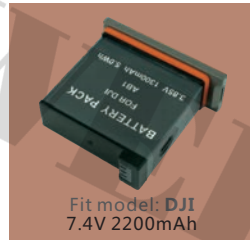
106 x 65 x 32mm

**DIGITAL CAMERA
&
VIDEO CAMCORDER
BATTERY PACKS
&
CHARGERS**





BATTERY PACKS





Fit model: **GoPro**
3.85V 1720mAh



Fit model: **SANYO**
3.6V 2300mAh



Fit model: **BENQ**
3.7V 800mAh



Fit model: **SYMBOL**
7.4V 3500mAh



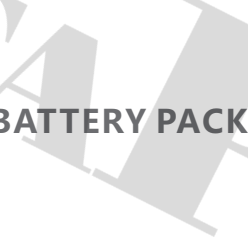
Fit model: **insta360**
3.8V 1200mAh



Fit model: **GARMIN**
3.7V 2000mAh



Fit model: **HITACHI**
7.2V 2600mAh



Fit model: **HP**
7.4V 2200mAh



Fit model: **JVC**
7.2V 750mAh



Fit model: **PENTAX**
7.2V 1100mAh



Fit model: **KYOCERA**
3.6V 2600mAh



Fit model: **HITACHI**
7.2V 2600mAh



Fit model: **HP**
7.4V 2200mAh



Fit model: **JVC**
7.2V 750mAh



Fit model: **CASIO**
3.7V 1100mAh

BATTERY PACKS

*All brands, trademarks and registered trademarks are the property of their respective holders.



CHARGERS

CBFR008



CBFR009



Specifications:

Input:
100 - 240V; 50 / 60Hz
Output:
DC 4.2V / 8.4V
550~650mA
Dimensions:
80 x 50 x 31mm

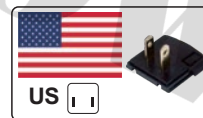


Interchangeable Charger Adapter Plates

Plate Suitable for different battery models, simply change the charger plate.



AC Power Adapter



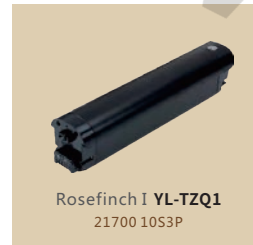


E-BIKE & WHEELCHAIR BATTERY PACKS

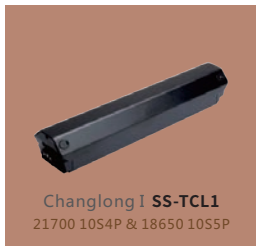
E-bike Battery Packs

In-frame

Our e-bike battery packs are in compliance with **EN15194** & **EN ISO 13849-1**



In-frame



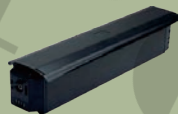
In-frame



In-frame



In-frame



Pathfinder I **SY-TTL1**
21700 10S4P & 18650 10S7P



Sapphire I **SY-TQY1**
21700 10S4P & 18650 13S4P



Stroll I **SY-TMB1**
21700 10S3P &
18650 13S4P / 10S5P



Swan II **SY-TTE2**
18650 10S4P



Tank I **SY-TTK1**
21700 13S4P / 10S5P



Youth I **SY-TQN1**
18650 13S4P / 10S5P



Hummer II **HY-THM2**
21700 13S4P



Tian Ma I **HY-TTMS**
18650 10S2P



Xiao Long I **HY-TXL1**
18650 13S4P / 10S5P



Down Tube



E-bike & Wheelchair Battery Packs

Rear Carrier

Our e-bike battery packs are in compliance with **EN15194** & **EN ISO 13849-1**



Rear Carrier



Hai Ying IV **SS-CHY4**
18650 10S4P



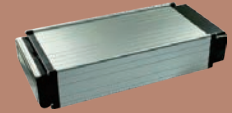
Kai Long I **SS-CKL1**
21700 10S4P & 18650 10S6P



Lucky Dragon I **SS-CJL1**
18650 13S4P / 10S5P / 10S4P



Shooting Star I **SS-CLX1**
18650 10S3P



Sky Dragon I **SS-CTL1**
18650 13S4P / 10S5P



Brilliance III **RE-CGM3T**
18650 13S4P / 10S5P



Silver Shark I **RE-CYS1**
18650 10S3P



Seahorse I **HY-CHM1UW**
18650 10S4P



Apollo I **KN-CAP1**
18650 13S4P / 10S5P

Multi-fit



Blue Whale **YL-MLJ1**
18650 13S3P / 10S4P



Coral I **YL-MSH1**
18650 10S3P



Jellyfish I **YL-MSM1**
18650 13S3P / 10S4P



Sea Turtle **YL-MHG1**
18650 10S3P / 7S4P



Seahorse I **YL-MHM1**
18650 7S4P



Starfish I **YL-MHX1**
18650 10S3P

Seat Post



Whitebait **YL-SYY1**
18650 13S4P / 10S5P



Starfish II **SS-SHX2**
18650 10S4P



With Controller Box Base



Welding



Clipping



Water Bottle



Dragonfly I YL-WXQ1
18650 7S2P



Scarab I YL-WJG1
18650 7S3P



Sky Bull I YL-WTN1
18650 13S3P / 10S4P



Train II SS-WDC2
18650 13S3P / 10S4P



Cuttle I RE-WHT1C
18650 7S2P



Raccoon I RW-WHX1
18650 10S2P



Extra Space for controller



CHARGERS

60W Charger

Model	CPF061015
Battery Voltage	36V
AC Input	100V - 240V
Frequency	50Hz / 60Hz
DC Output	42V
Charging Current	1.5A
Dimensions	110.5 (L) x 55 (W) x 32 (H) mm
Certifications	CE, FCC

60W Charger

Model	CTF060720
Battery Voltage	24V
AC Input	100V - 240V
Frequency	50Hz / 60Hz
DC Output	29.4V
Charging Current	2A
Dimensions	111 (L) x 51.3 (W) x 33.8 (H) mm
Certifications	CE, FCC, RoHS

60W Charger

Model	CPC060720
Battery Voltage	24V
AC Input	100V - 240V
Frequency	50Hz / 60Hz
DC Output	29.4V
Charging Current	2A
Dimensions	131 (L) x 59.3 (W) x 32 (H) mm
Certifications	CE, GS, CTUVUS

60W Charger

Model	CZF060720
Battery Voltage	24V
AC Input	100V - 240V
Frequency	50Hz / 60Hz
DC Output	29.4V
Charging Current	2A
Dimensions	102.5 (L) x 50.5 (W) x 31.3 (H) mm
Certifications	CE, FCC

80W Charger

Model	CPF081020
Battery Voltage	36V
AC Input	100V - 240V
Frequency	50Hz / 60Hz
DC Output	42V
Charging Current	2A
Dimensions	141 (L) x 61 (W) x 34.5 (H) mm
Certifications	CE, FCC, ERP, RoHS, REACH


80W Charger

Model	CTF081020
Battery Voltage	36V
AC Input	100V - 240V
Frequency	50Hz / 60Hz
DC Output	42V
Charging Current	2A
Dimensions	141.2 (L) x 60.5 (W) x 33.6 (H) mm
Certifications	CE, FCC, ERP, RoHS, REACH




80W Charger

Model	CMM081020
Battery Voltage	36V
AC Input	100V - 240V
Frequency	50Hz / 60Hz
DC Output	42V
Charging Current	2A
Dimensions	147 (L) x 65.5 (W) x 34.2 (H) mm
Certifications	CE, FCC, RoHs, KC, GS, RCM, UL, CB, PSE




80W Charger

Model	CPC081020
Battery Voltage	36V
AC Input	100V - 240V
Frequency	50Hz / 60Hz
DC Output	42V
Charging Current	2A
Dimensions	155 (L) x 71 (W) x 34 (H) mm
Certifications	CE, GS, UL, FCC, CB, KCC, SAA




80W Charger

Model	CPF081020H
Battery Voltage	36V
AC Input	100V - 240V
Frequency	50Hz / 60Hz
DC Output	42V
Charging Current	2A
Dimensions	139.6 (L) x 93.9 (W) x 61.6 (H) mm
Certifications	CE, FCC



100W Charger

Model	CPF101320
Battery Voltage	48V
AC Input	100V - 240V
Frequency	50Hz / 60Hz
DC Output	54.6V
Charging Current	2A
Dimensions	172.2 (L) x 72.8 (W) x 36.5 (H) mm
Certifications	CE, FCC, ERP, RoHs, REACH



120W Charger

Model	CPN121302
Battery Voltage	48V
AC Input	100V - 240V
Frequency	50Hz / 60Hz
DC Output	54.6V
Charging Current	2A
Dimensions	174 (L) x 83 (W) x 36.3 (H) mm
Certifications	GS, CE, CB, RCM, PSE, KC



130W Charger

Model	CPF131020
Battery Voltage	36V
AC Input	100V - 240V
Frequency	50Hz / 60Hz
DC Output	42V
Charging Current	3A
Dimensions	172.2 (L) x 72.8 (W) x 36.5 (H) mm
Certifications	CE, FCC, ERP, RoHs, REACH

130W Charger



Model	CPN131030
Battery Voltage	36V
AC Input	100V - 240V
Frequency	50Hz / 60Hz
DC Output	42V
Charging Current	3A
Dimensions	174 (L) x 83 (W) x 36.3 (H) mm
Certifications	CE, CB, FCC

160W Charger



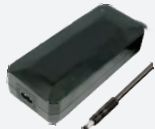
Model	CPC161040	CPC161330
Battery Voltage	36V	48V
AC Input	100V - 240V	
Frequency	50Hz / 60Hz	
DC Output	42V	54.6V
Charging Current	4A	3A
Dimensions	182 (L) x 89 (W) x 41 (H) mm	
Certifications	CE, GS, UL, FCC, CB	

160W Charger



Model	CMM161040	CMM161330
Battery Voltage	36V	48V
AC Input	100V - 240V	
Frequency	50Hz / 60Hz	
DC Output	42V	54.6V
Charging Current	4A	3A
Dimensions	179 (L) x 80 (W) x 37.2 (H) mm	
Certifications	CE, FCC, RoHS, KC, RCM, GS, CB, PSE, CE, FCC, RoHS, KC, RCM, GS, CB, PSE, BSMI	

160W Charger



Model	CPF161040	CPF161330
Battery Voltage	36V	48V
AC Input	100V - 240V	
Frequency	50Hz / 60Hz	
DC Output	42V	54.6V
Charging Current	4A	3A
Dimensions	182 (L) x 79 (W) x 42 (H) mm	
Certifications	CE, FCC, ERP, RoHS, REACH	

160W Charger




Model	CFF161040
Battery Voltage	36V
AC Input	100V - 240V
Frequency	50Hz / 60Hz
DC Output	42V
Charging Current	4A
Dimensions	139.6 (L) x 61.6 (W) x 34 (H) mm
Certifications	CE, FCC

200W Charger



Model	CYY200770
Battery Voltage	24V
AC Input	100V - 240V
Frequency	50Hz / 60Hz
DC Output	29.4V
Charging Current	7A
Dimensions	203 (L) x 81 (W) x 47.5 (H) mm
Certifications	CE, TUV



220W Charger

Model	CFF221050	CFF221340
Battery Voltage	36V	48V
AC Input	100V - 240V	
Frequency	50Hz / 60Hz	
DC Output	42V	54.6V
Charging Current	5A	4A
Dimensions	182 (L) x 86.5 (W) x 46.6 (H) mm	
Certifications	CE, UL, RoHs	



230W Charger

Model	FPN230880
Battery Voltage	24V
AC Input	100V - 240V
Frequency	50Hz / 60Hz
DC Output	28.8V
Charging Current	8A
Dimensions	196 (L) x 99 (W) x 40.5 (H) mm
Certifications	CE, CB, GS, PSB



250W Charger

Model	CPN251060
Battery Voltage	36V
AC Input	100V - 240V
Frequency	50Hz / 60Hz
DC Output	42V
Charging Current	6A
Dimensions	196 (L) x 99 (W) x 40.5 (H) mm
Certifications	CE, CB, FCC



250W Charger

Model	CMM251060
Battery Voltage	36V
AC Input	100V - 240V
Frequency	50Hz / 60Hz
DC Output	42V
Charging Current	6A
Dimensions	220 (L) x 105.8 (W) x 48.3 (H) mm
Certifications	CE, FCC, RoHs



300W Charger

Model	CYY3007A0
Battery Voltage	24V
AC Input	100V - 240V
Frequency	50Hz / 60Hz
DC Output	29.4V
Charging Current	10A
Dimensions	203 (L) x 100 (W) x 55 (H) mm
Certifications	CE, FCC



300W Charger

Model	CPC301070
Battery Voltage	36V
AC Input	100V - 240V
Frequency	50Hz / 60Hz
DC Output	42V
Charging Current	7A
Dimensions	185 (L) x 90 (W) x 42.5 (H) mm
Certifications	CE, FCC

GAN CHARGERS

Compare with switching charger

Size
Smaller

1/2

Higher
Efficiency

7%

Lighter

Powerful

Safer

Greater Durability



84W

Input Voltage range: 90V-264V AC
Output: 42V 2A
Max Power: 84W
Size: L120 x W50 x H32mm



109W

Input Voltage range: 176V-264V AC
Output: 54.6V 2A
Max Power: 109W
Size: L120 x W50 x H32mm



168W

Input Voltage range: 90V-264V AC
Output: 42V 4A / 54.6V 3.3A
Max Power: 168 W
Size: L142 x W61.8 x H34.5mm



350W

Input Voltage range: 90V-264V AC
Output: 54.6V 6A (NMC 13S) /
58.8V 6A (NMC 14S)
Max Power: 350 W
Size: L175 x W82 x H42mm

GaN Tech

Max. 350W Output

GaN Fast Charge

Small Volume

Supports PD Fast Charging Protocol

Intelligent Protection

Better Price

DC PLUG for Battery Chargers:



DC SOCKET OF Battery Packs:





USB-C Charge

Charge your batteries without an extra charger



Money Saving

Over 2000 life cycles



Eco-Friendly

Reduce carbon footprint and waste

TYPE-C RECHARGEABLE LITHIUM BATTERY



From 2025 onwards, USB-C port will become a necessary port for various electronic devices. PortaPower has specially launched a series of batteries that can be charged using TYPE C instead of alkaline batteries and NiMH batteries, to meet the market needs and achieve environmental protection and cost reduction.

Compatible CR123



FLU1611
3.6V 850mAh



FLU123
3V 950mAh



Standard
Version
FL123
3.6V 950mAh

Compatible C



FLU1851
1.5V 5000mWh

Compatible AAA



FLU233
1.5V 1100mWh



FL233
1.5V 1600mWh

Compatible AA



FLU212
1.5V 4000mWh



Standard
Version
FL212
1.5V 4000mWh

Compatible D



FLU1852
1.5V 5800mWh



Patented USB-C Charging



Up To 2000 Cycles



3V/3.6V Constant Output



Fast Charging

WIDELY APPLICATION

Compatible With a Wide Range of 1.5V Devices



Camera



Gas Stove



Radio



Electric Toy



Doorbell



Flashlight



Microphone



Watches



Electric Piano



Water Heater



LED Candle Light



Smoke Detectors



Emergency Light



Night Vision Glasses

Charger



- LED Charging Indicator
- DC Voltage USB-C Charging
- Independent charging slots can charge different compatible batteries freely
- Automatically turns to the trickle charge mode when fully charged



EXTERNAL BATTERIES

NEW

EL1904

Medical grade charger or PD charger to match different occasion

EL1906

Fully charge the batteries within 2 hours with PD140W input



PROFESSIONAL SERIES

High power rapid charging, backup various devices anytime, anywhere

66840 / 69600mAh | MAX. 290W | DC, USB-A, USB-C
High Power | High Power | 5 Output Ports

LCD Smart Display | UPS Function
Beep Alarm

Applications:



High Quality 21700 Cells



Suitable for Oxygen Machine



Charge and Discharge Simultaneously



Compact & Portable UPS



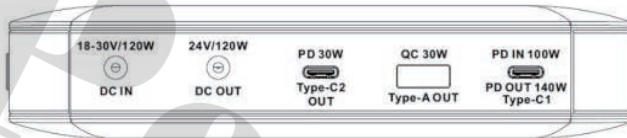
Alert When SOC is Below 5%



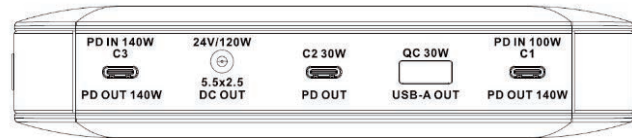
High Quality Chipsets for Multiple Protection

*All brands, trademarks and registered trademarks are the property of their respective holders.

EL1904



EL1906



Specifications :

Model	EL1904	EL1906
Capacity	66840 / 69600 mAh	
Battery General Info	21700, 5570mAh / Cell, 247.3Wh or 21700, 5800mAh / Cell, 257.5Wh	
DC-5521 Input	18-30V Max. 120W (Standard: 19V/3A)	
140W Type-C Input		5V/3A, 9V/3A, 15/3A, 20V/5A, 28V/5A
100W Type-C Input		5V/3A, 9V/3A, 15/3A, 20V/5A
140W Type-C Output		5V/3A, 9V/3A, 15/3A, 20V/5A, 28V/5A
DC-5525 Output		24V/5A Max. 120W
30W Type -C Output		5V/3A, 9V/3A, 12V/2.5A
USB-A QC3.0 Output		5V/3A, 9V/3A, 12V/2.5A
Max. Output Power (one port)	140W	
Max. Output Power (overall)	290W	430W
Size	243 x 152 x 33 mm	
Full Charging Time	2.5 hour	

EL1699 <100Wh
✈️ Carry-on allowed



Applications:



Cold and Compression Therapy System



Laptop



Sputum Suction Machine



CCTV



Infrared Massaging Belt



Medical Tablet

*All brands, trademarks and registered trademarks are the property of their respective holders.

TRAVEL SERIES

Max. 31500 mAh



Accessories

Connectors for Laptop
(We provide 38 kinds of tip to choose)



PD



QC



AC Adapter (19V / 45W)
(Medical Grade Charger Available)



Using suitable connector provided with this product may charge any 19V laptop by AC adapter directly.

PD65W



Specifications:

Model	EL1699		
Input	DC 12V-24V or PD65W		
Output	1	16V == 4A /	
		19V == 3.5A /	
		24V == 2.5A	
	2	QC3.0	
		3	PD65W
Size	177 x 110 x 23 mm		
Capacity	27000 mAh		
Cell	Panasonic NCR18650BD x 9		

POWER STATION



Charging Time



AC Charging



Capacity



AC Output



DC Output



USB Output



Wireless charging



Solar Panel Charging



1200W

PPF-PT1200
1152Wh
600W (Fast Charge)
300W (Rapid Charge)
MPPT: 400W

1600W

PPF-PT1600
2160Wh
1300W (Fast Charge)
650W (Rapid Charge)
MPPT: 800W



2200W

PPF-PT2200
2160Wh
1300W (Fast Charge)
650W (Rapid Charge)
MPPT: 800W

2400W

PPF-PT2400
2304Wh
1300W (Fast Charge)
650W (Rapid Charge)
MPPT: 1200W

Intelligent Home
Independent Control

Plug-and-Play

It provides stable power for medical equipment and features switchable 12V~24VDC output, as well as AC and USB output options.



UPS Function

The 1200W/2200W ensures stable power supply and automatically switches to backup power within 0.02 seconds during power outages.



Environmentally Friendly

4000 life cycles Continuous charging and discharging Safe and stable performance



Easy Operation APP

- Real-time Monitor
- Support multi-languages
- Remaining Power Monitor
- Calculate remaining charging time
- Remote control device & LED lights



APP

Real-time Monitoring

- ⦿ Power Your Life Anywhere & Anytime
- ⦿ Real-time in and out energy information
- ⦿ Power usage statistic chart
- ⦿ Multiple devices control and sharing



Real-Time Monitoring

Monitor the battery power, charging progress, power consumption and other data. Allowing you to understand real-time power usage.

Remote Control Device

Through the app, the user can power on/off the device and achieve intelligent control at their fingertips.

Tailor-Made App

With the strong ability of our development team, PortaPower could design the app with customers to reach all your needs.

Money Saving

Setting the daily schedule of charge and discharge and forced inversion through the app. It allows the users benefit from the price difference between on-peak and off-peak.

Equipment Sharing

The main account user could share the devices with other users with one click of the app.

Remaining Power Detection

Show current remaining battery power and calculate remaining working time.

Multilingual Display

Our app is easy to use and the user can easily change the language by their smartphone settings. It allows the user to operate and enjoy the app at their fingertips.

APPLICATIONS



Medical Applications



Home Application



Travel Applications

BATTERY CELLS





YLE manufactures high quality Li-NMC cells which can be used in the making of battery packs for eBikes, LED Lightings, Household Appliances and many other devices.



NCR16300A95 A

Nominal Voltage: 3.6V
Typical Capacity: 950mAh
Continuous Current: 2A



NCR18350D125 DT

Nominal Voltage: 3.6V
Typical Capacity: 1250mAh
Continuous Current: 3A



NCR18350A140 A

Nominal Voltage: 3.6V
Typical Capacity: 1400mAh
Continuous Current: 3A



NCR14430A115 A

Nominal Voltage: 3.6V
Typical Capacity: 1150mAh
Continuous Current: 2.5A



NCR14500A125 A

Nominal Voltage: 3.6V
Typical Capacity: 1250mAh
Continuous Current: 2.5A



NCR18500A240 A

Nominal Voltage: 3.6V
Typical Capacity: 2400mAh
Continuous Current: 5A



Battery cells of different capacity available



INR18650D260 D

Nominal Voltage: 3.6V
Typical Capacity: 2600mAh
Continuous Current: 10A



NCR18650A300 A

Nominal Voltage: 3.6V
Typical Capacity: 3000mAh
Continuous Current: 6A



NCR18650D290 D

Nominal Voltage: 3.6V
Typical Capacity: 2900mAh
Continuous Current: 10A



NCR18650A335 A

Nominal Voltage: 3.6V
Typical Capacity: 3350mAh
Continuous Current: 6A



NCR18650D320 D

Nominal Voltage: 3.6V
Typical Capacity: 3200mAh
Continuous Current: 10A



NCR18650D350 D

Nominal Voltage: 3.6V
Typical Capacity: 3450mAh
Continuous Current: 10A



INR18650D250 G6

Nominal Voltage: 3.6V
Typical Capacity: 2500mAh
Continuous Current: 22A



NCR18650A320 A

Nominal Voltage: 3.6V
Typical Capacity: 3200mAh
Continuous Current: 6A



NCR18650 36 D3

Nominal Voltage: 3.6V
Typical Capacity: 3600mAh
Continuous Current: 10A



NCR26650D600 DT

Nominal Voltage: 3.6V
Typical Capacity: 6000mAh
Continuous Current: 10A



IFR26650D420 D

Nominal Voltage: 3.2V
Typical Capacity: 4200mAh
Continuous Current: 8A



NCR21700D500 DT

Nominal Voltage: 3.6V
Typical Capacity: 5000mAh
Continuous Current: 10A

We are the Authorized Assembler of **Panasonic** high power consumption battery packs.



NCR18650BD

Nominal Voltage: 3.6V
Typical Capacity: 3180mAh
Continuous Current: 10A



NCR18650GA

Nominal Voltage: 3.6V
Typical Capacity: 3450mAh
Continuous Current: 10A



NCR2170M

Nominal Voltage: 3.6V
Typical Capacity: 5220mAh
Continuous Current: 12A



NCR2270A

Nominal Voltage: 3.6V
Typical Capacity: 5635mAh
Continuous Current: 12A

We are the Authorized Assembler of Samsung & LG high power consumption battery packs.



INR18650-35E

Nominal Voltage: 3.6V
Typical Capacity: 3350mAh
Continuous Current: 8A



INR21700-50E

Nominal Voltage: 3.6V
Typical Capacity: 4900mAh
Continuous Current: 9.8A



INR21700-58E

Nominal Voltage: 3.6V
Typical Capacity: 5330mAh
Continuous Current: 10.9A



INR21700M50

Nominal Voltage: 3.69V
Typical Capacity: 4932mAh
Continuous Current: 7.2A



INR21700M58

Nominal Voltage: 3.6V
Typical Capacity: 5570mAh
Continuous Current: 10A

Automation — Mechanization — Informatization — Intelligence

YOUR ENERGY SOLUTION PROVIDER

HONG KONG HEADQUARTER:

PORTAPOWER (China) Limited
Flat 1003, 10/F., Hopeful Factory Centre,
10-16 Wo Shing St., Fotan, N.T., Hong Kong
Tel: (852) 2687 6323
Fax: (852) 2687 6312

GUANGDDONG FACTORY:

Guangzhou Zhanhui Electronics Co., Ltd
No. 320, Shinan Road, Guantan, Dongchong,
Nansha District, Guangzhou, China, 511453
Tel: (86) 020-6680 4228
Fax: (86) 020-6680 4229

HUNAN FACTORY:

Changde Yik Lik Energy Ltd.
Anxiang County Industrial Area,
Changde City, Hunan, China, 415600
Tel: (86) 0736-433 8338
Fax: (86) 0736-433 8333

SERVICE CENTRE:

PORTAPOWER Service Center
Alt-Kaulsdorf 18
12621 Berlin, Germany
Tel: +49 (0)30 60985356

TAIWAN FACTORY:

PORTAPOWER Electronics Ltd.
1/F, No.79, Ln.271, Liancun Rd., Fengyuan Dist.,
Taichung City, Taiwan (R.O.C), 420
Tel: +886-4 2539 3829
Fax: +886-4 2539 3829